

# Tonarten und Tonleitern

## Kompetenzbereich: Musiklehre

Bestimme die Dur-Tonarten.



\_\_\_\_\_



\_\_\_\_\_



\_\_\_\_\_



\_\_\_\_\_



\_\_\_\_\_

Schreibe die passenden Vorzeichen auf!

F-Dur:



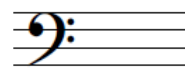
D-Dur:



G-Dur:



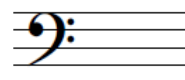
F-Dur:



C-Dur:



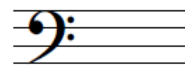
C-Dur:



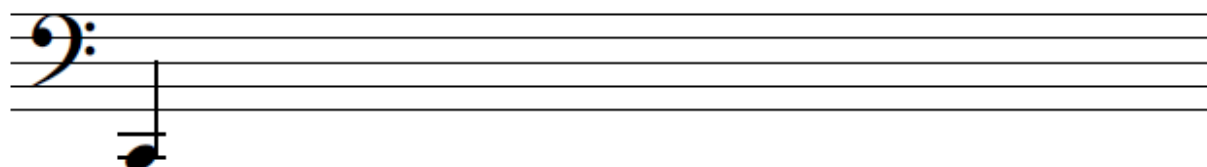
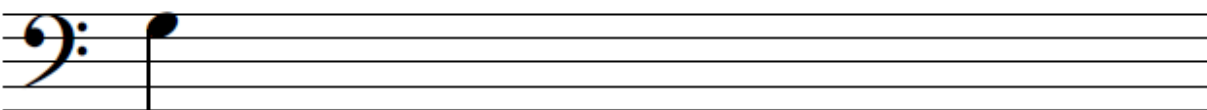
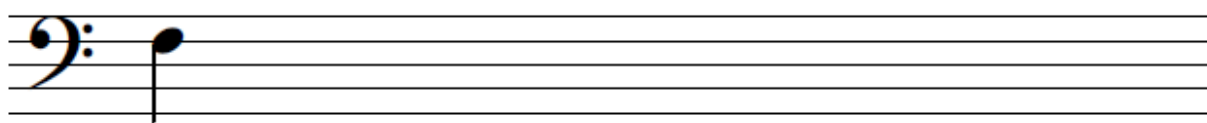
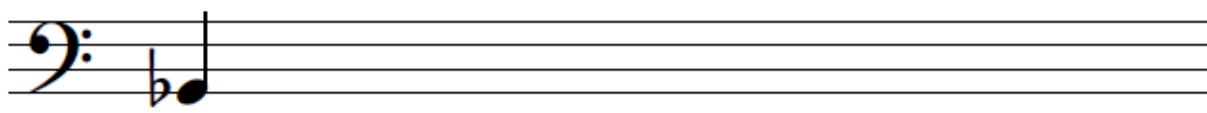
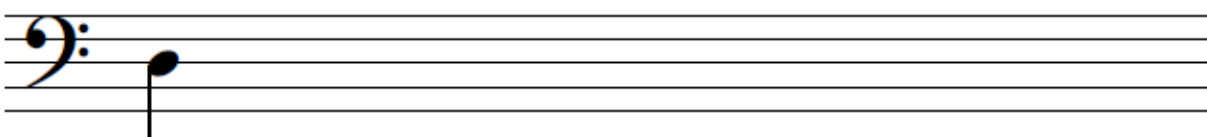
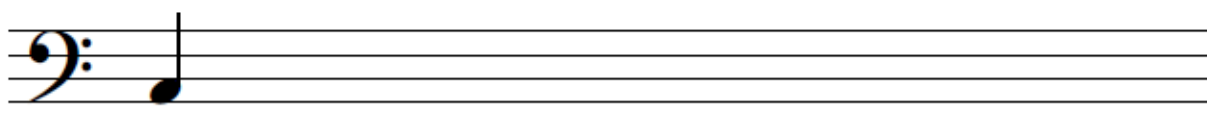
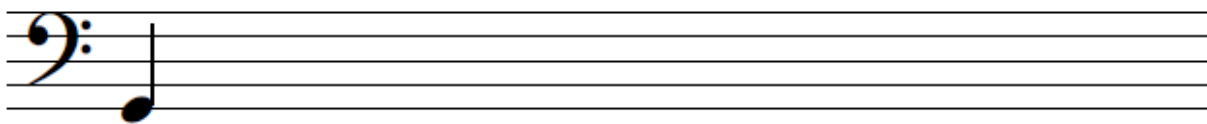
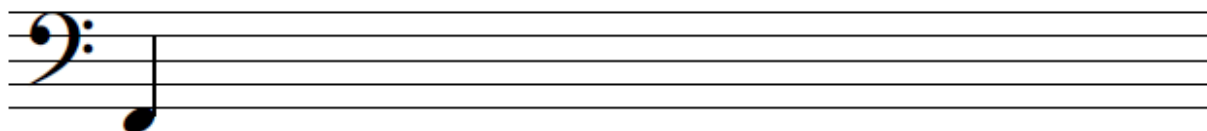
B-Dur:



G-Dur:



Schreibe die Dur-Tonleiter auf. Vergiss die Vorzeichen nicht!



Bestimme die Dur-Tonarten. Achtung – manche Tonleitern sind durcheinandergeraten!




---




---




---




---




---




---




---